



Synodon Launches *realSens*[™]Intel Web Data Delivery Platform

For Immediate Release

Edmonton, Alberta – May 12, 2011 - Synodon Inc. ("Synodon") [TSXV-SYD], today unveiled its new *realSens*[™]Intel online reporting system that is revolutionizing the way utilities monitor and maintain their assets and right-of-ways (ROW).

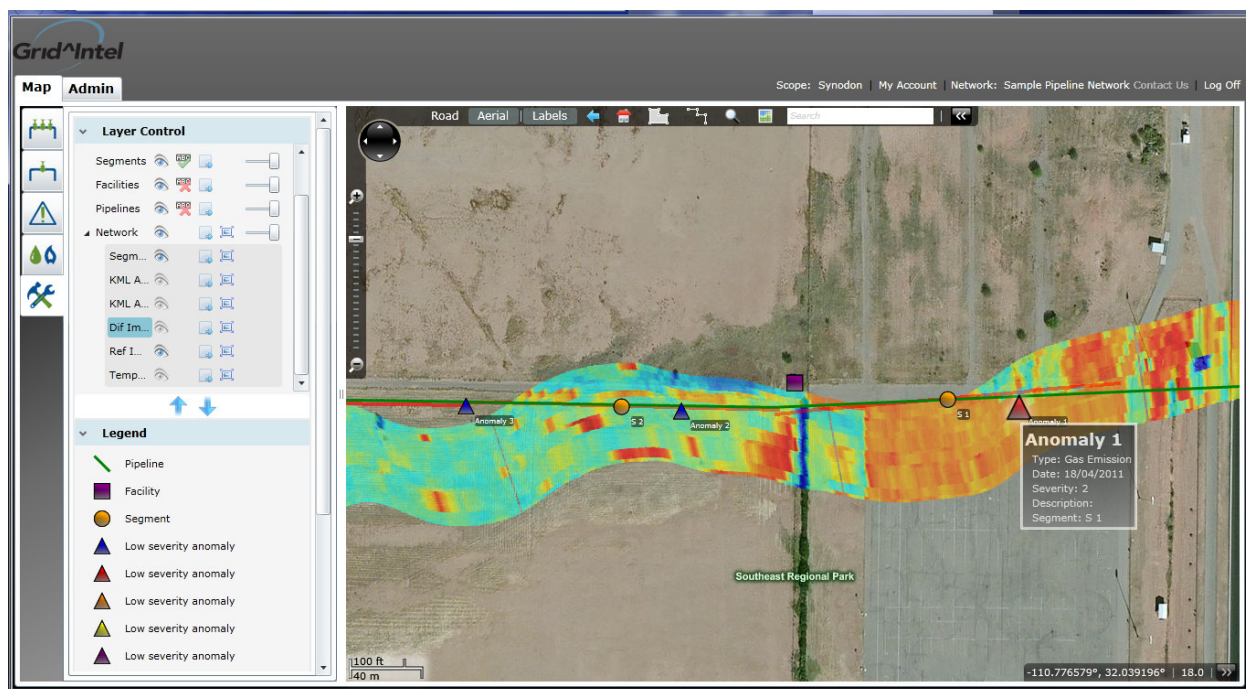
"We feel that with the introduction of *realSens*[™]Intel, we have enhanced a key part of our value proposition based on customer feedback over the last year", said Adrian Banica, Chief Executive Officer of Synodon. "This tool provides multiple stakeholders within each of our client organizations the ability to efficiently and effectively access and utilize all of the *realSens*[™] survey intelligence to continually improve the management of their pipeline assets".

How *realSens*[™]Intel works:

1. Initial acquisition of high-accuracy base map data is collected using the *realSens*[™] instrumentation
2. The collected data is used to create a complete 2D model of the right-of-way and gas emissions
3. Data is stored on a secure on-line data server, allowing easy access at any time by the client
4. The *realSens*[™] instrument is used during subsequent inspection flights to refresh the data set and identify changes to existing data
5. New data is periodically added to the data server, making it constantly available to the customer
6. At any time, using the *realSens*[™]Intel software, the customer is able to access and use their on-line data

The *realSens*[™]Intel system, is a secure online data management system that enables customers to share critical information (aerial images, GIS data, *realSens*[™] gas surveys, emergent ROW conditions, etc.) across their entire organization – providing greater day-to-day efficiencies and in-depth reporting for a variety of corporate, government, regulatory compliance requirements, asset planning and maintenance and pipeline engineering activities. This hosted solution makes the enormous quantity of aerial survey intelligence available over the internet and always accessible through a standard web browser, to any authorized user. This relieves the client from the burden of storing, organizing, and publishing vast amounts of imagery and gas sensor data across their organization, which are tasks that are non-core to their operation and only become more difficult as more of these data sets are acquired in the future. The included workflow management toolset helps multi-functional teams manage their response activities from the office to the field staff.

The *realSens*[™]Intel platform will be made available to both new and existing customers.



Synodon Inc. (www.synodon.com) is an Edmonton based technology company which has developed and demonstrated an advanced airborne remote gas sensing system called *realSens*TM, based on technologies developed under the Canadian Space Program and by Synodon scientists. The company provides a full service gas emissions monitoring and quantification service to a variety of industries, including hydrocarbon (oil and gas), environmental, agricultural and for a variety of gases including methane, ethane and ammonia. The initial focus is on the hydrocarbon industry and in particular the natural gas pipeline sector.

For more information, please contact:

Synodon Inc.

Adrian Banica
 President & CEO
 Tel: 780.468.9568
 Email: investors@synodon.com

Uptick Communications Inc.

Jamie Sellers
 President
 416.646.7520
jamie@uptickcommunications.com

Neither TSX Venture Exchange nor its Regulation Services Provider (as that term is defined in the policies of the TSX Venture Exchange) accepts responsibility for the adequacy or accuracy of this release.

Forward-Looking Statements

Statements in this release that are forward-looking statements are subject to various risks and uncertainties concerning the specific factors disclosed under the heading "Risks Relating to the Business", specifically in the "Additional Financing" section, and elsewhere in the Company's periodic filings with Canadian securities regulators. Such information contained herein represents management's best judgment as of the date hereof based on information currently available.